

D-Link

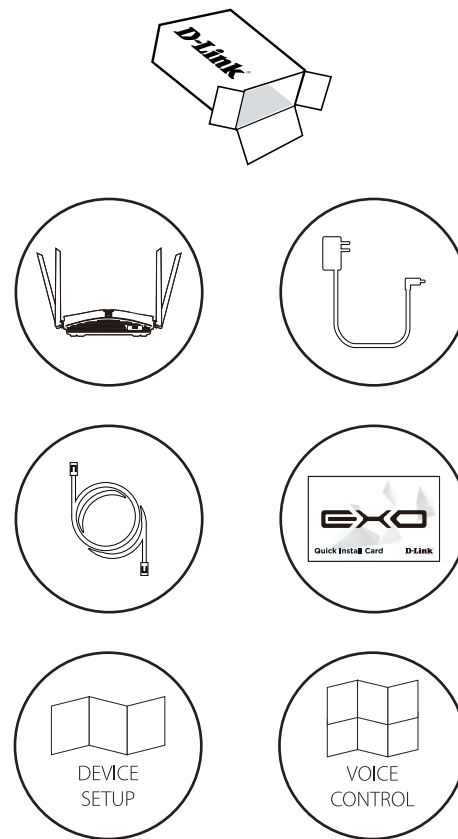
EXO

AC1300 Smart Mesh
Wi-Fi Router



Simple **Setup** Guide

DIR-1360



1

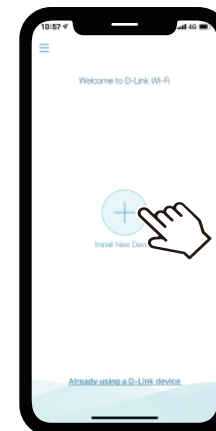
Download on the
App Store

GET IT ON
Google Play



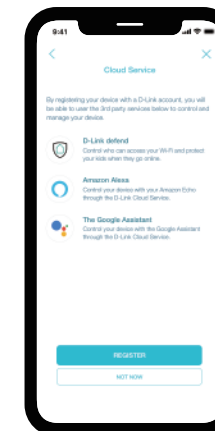
Scan the QR code above to download the D-Link Wi-Fi app for your compatible device.

2



Tap **Install New Device**. Scan the QR code in the Quick Install Card. Follow the on-screen instructions to proceed with setup.

3



Tap **Register** to sign up for a D-Link Cloud Services account in order to utilize available third party services, or tap **Not Now** and proceed to step 5.

4



Agree to the Terms of Service and Privacy Notice and tap **Keep Protecting Me** to use D-Link defend, or tap **Not Now** to continue.

5



You can now connect to your Wi-Fi network using the Wi-Fi name and password created during the setup. Tap **Finish** to end setup.

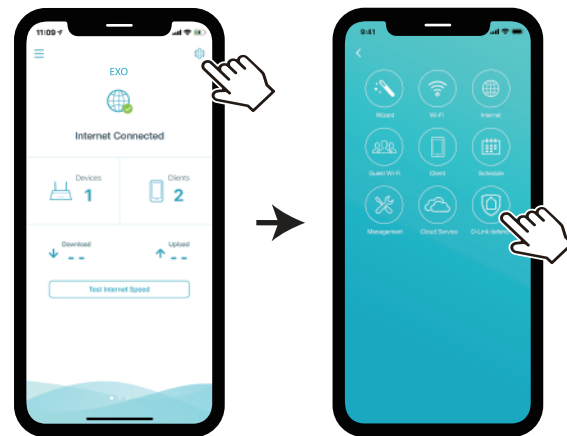



D-Link defend

Setup Guide

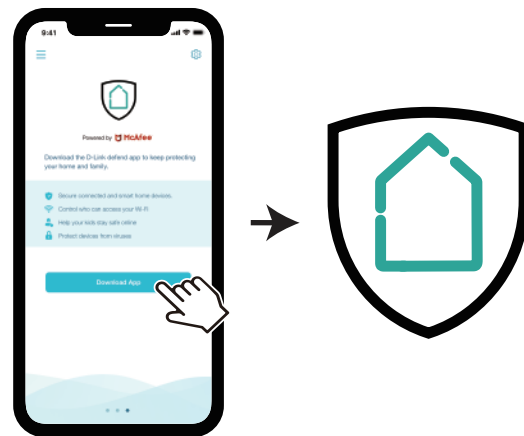


1



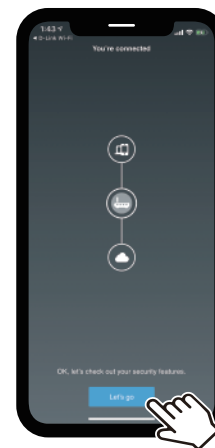
On the home screen tap  then tap on the D-Link defend icon.

2



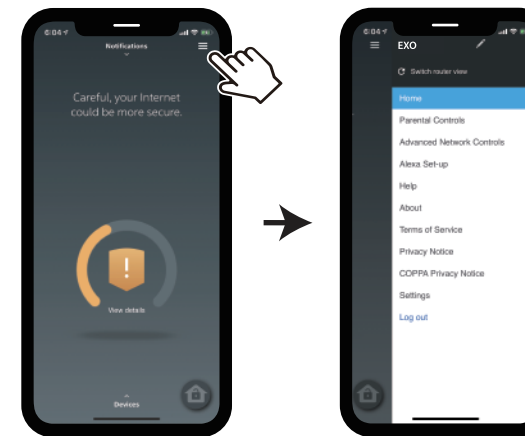
Tap **Download App**. After D-Link defend is installed, return to the D-Link Wi-Fi app. Repeat step 1 to launch D-Link defend.

3



Tap **Let's Go** and follow the on-screen tips to make your Internet more secure.

4



Tap  on the home screen for more features such as Parental Controls and Alexa setup instructions.

GPL Code Statement

This D-Link product includes software code developed by third parties, including software code subject to the GNU General Public License ("GPL") or GNU Lesser General Public License ("LGPL"). As applicable, the terms of the GPL and LGPL, and information on obtaining access to the GPL code and LGPL code used in this product, are available to view the full GPL Code Statement at:

<https://tsd.dlink.com.tw/GPL>

The GPL code and LGPL code used in this product is distributed WITHOUT ANY WARRANTY and is subject to the copyrights of one or more authors. For details, see the GPL code and the LGPL code for this product and the terms of the GPL and LGPL.

Written Offer for GPL and LGPL Source Code

Where such specific license terms entitle you to the source code of such software, D-Link will provide upon written request via email and/or traditional paper mail the applicable GPL and LGPL source code files via CD-ROM for a nominal cost to cover shipping and media charges as allowed under the GPL and LGPL.

Please direct all inquiries to:

Email:
GPLCODE@dlink.com

Snail Mail:
Attn: GPLSOURCE REQUEST
D-Link Systems, Inc.
17595 Mt. Herrmann Street
Fountain Valley, CA 92708

Technical Support

Having trouble installing your new product? D-Link's website contains the latest user documentation and software updates for D-Link products. You can also contact D-Link Technical Support through our website, or phone number below.

United States
Internet: <http://support.dlink.com>
Phone: 877-453-5465